

Press Release

HOUSEHOLD LABOUR FORCE SURVEY FOR THE PERIOD OF AUGUST 2008 (July, August, November 2008)

No: 181
November 17, 2008
10:00

According to the Address Based Population Registration System (ABPRS) developed within the coverage of Population Services Law No. 5490 acted in 2006, the results of census announced on the date of December 31, 2007.

Household Labour Force Survey results have been weighted according to the population projections based on 1990 and 2000 Censuses. Until the new population projections will be ready, the results of the household labour force survey will be disseminated according to the total population obtained from the ABPRS.

This adjustment does not cause any change over the proportional distribution of labour force indicators which were presented before, but causes a difference in absolute values. The ultimate revision on household labour force survey results will be realized in the future following the new projections considering the distributions of age group, sex and urban/rural will be ready.

Working age population increased by 770 thousand in the period of August 2008 compared to the same period of the previous year

While non-institutional civilian population increased by 767 thousand persons and has reached to 69 million 756 thousand persons, non-institutional working age civilian population has increased by 770 thousand and has reached to 50 million 87 thousand persons in the period of August 2008.

Non-agricultural employment increased by 310 thousand

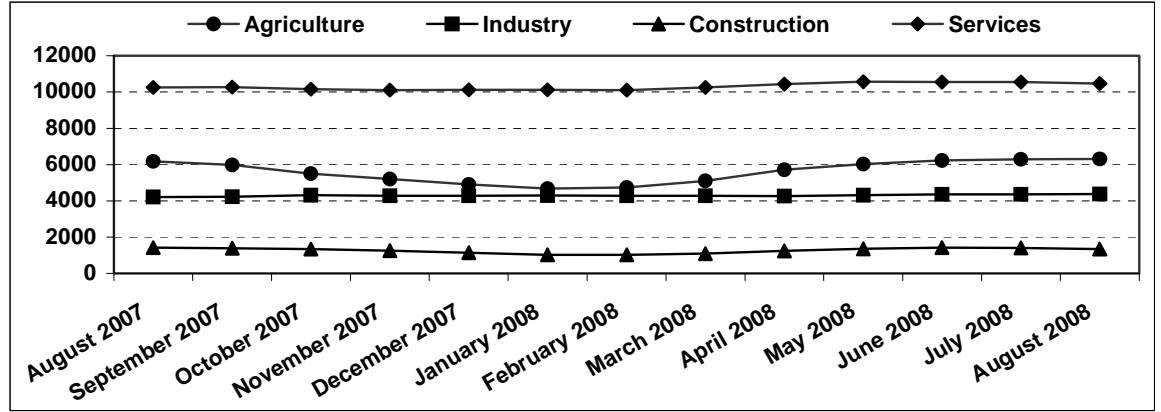
Number of employed persons increased by 449 thousand persons compared to the same period of the previous year and has reached to 22 million 509 thousand persons in the period of August 2008. Agricultural employment **increased by 140 thousand persons** and non-agricultural employment **increased by 310 thousand persons** in this period.

Table 1. Labour force status (August)

	TURKEY		URBAN		RURAL	
	2007	2008	2007	2008	2007	2008
Non-institutional civilian population (000)	68 989	69 756	43 590	44 501	25 399	25 254
Population 15 years old and over (000)	49 317	50 087	31 521	32 332	17 796	17 755
Labour force (000)	24 292	24 948	14 593	15 149	9 700	9 798
Employed (000)	22 060	22 509	12 901	13 326	9 159	9 183
Unemployed (000)	2 232	2 439	1 692	1 824	541	615
Labour force participation rate (%)	49.3	49.8	46.3	46.9	54.5	55.2
Employment rate (%)	44.7	44.9	40.9	41.2	51.5	51.7
Unemployment rate (%)	9.2	9.8	11.6	12.0	5.6	6.3
<i>Non-agricultural unemployment rate (%)</i>	11.9	12.7	12.0	12.6	11.8	13.4
<i>Youth unemployment rate⁽¹⁾(%)</i>	19.2	19.1	23.2	22.6	13.0	13.1
Underemployment rate (%)	2.8	3.2	2.6	2.7	3.3	3.9
<i>Underemployment rate of youth⁽¹⁾(%)</i>	2.9	3.7	2.6	2.8	3.4	5.1
Not in the labour force (000)	25 024	25 140	16 928	17 183	8 097	7 956

(1) Population within 15-24 age group

Figure 1. Sectoral distribution of employment, (In Thousand)



Of those who were employed in August 2008; 28.1 % was employed in agriculture, 19.5 % was employed in industry, 5.9 % was employed in construction and 46.5 % was employed in services. Employment in agriculture increased by 0.1 and industry increased by 0.4 while that construction decreased by 0.6 and the share of services realized same without any change.

Unemployment rate was 9.8% while non-agricultural unemployment rate was 12.7 %

Number of unemployed persons increased by 207 thousand persons compared to the same period of the previous year and has reached to 2 million 439 thousand persons in Turkey. Unemployment rate realized as 9.8 % with 0.6 points increase. Unemployment rate increased to 12 % with a 0.4 percentage points increase in urban areas and reached to 6.3 % with 0.7 percentage points increase in rural areas.

Non-agricultural unemployment rate realized as 12.7 % with 0.8 points increase compared to the same period of the previous year in Turkey. The rate is realized as 11.1 % with a 0.8 percentage points increase for male and 19.1 % for female with a 0.4 percentage points increase. In this period, of those who were unemployed;

- 69.8 % were male.
- 55.5 % had education below high school.
- 26.8 % were seeking job for one year or more.
- Unemployed persons were commonly seeking job through "their acquaintances" (30.1%).
- 82.4 % (2 million 10 thousand) had worked previously.
- Among those who were employed previously; 49.6 % were employed in "services", 22.8% were employed in "industry", 19.3% were employed in "construction", 8.3% were employed in "agriculture".

Structure of employment

In this period, of those who were employed;

- 72.7 % were male,
- 61.1 % had education below high school.
- 57.6 % were regular and casual employee, 26.6 % were self-employed and employer, 15.8 % were unpaid family worker.
- 61.8 % worked in establishments consisting of "1-9 employees".
- 2.8 % had an additional job.
- 3.8 % was seeking job either to replace the current job or to augment the existing job.
- 86.8 % of regular employees worked in permanent jobs.

Public sector employment

According to The Ministry of Finance's data, total public sector employment was 2 million 919 thousand persons in the third quarter in 2008. (Table 7)

Persons who were not registered to any social security institutions related to the main job

The ratio of persons who worked without any social security related to the main job declined to 46.6 % with 2.1 percentage point decrease. The share of persons who did not have any social security in agriculture decreased from 88.3 % to 87.4 % and that in non-agriculture decreased from 33.3 % to 30.7% compared to the same period of the previous year.

Labour force participation rate was 49.8% in the period of August 2008

Labour force participation rate (LFPR) realized as 49.8 % with 0.5 percentage points increase compared to the same period of the previous year for Turkey in August 2008 period. LFPR was realized as 73 % with 0.1 percentage point increase for male and realized as 27.1 % with 1 percentage points increase for female. LFPR was 46.9 % with a 0.6 percentage point increase in urban areas and 55.2 % with a 0.7 percentage point increase in rural areas in this period.

As for the distribution of labour force by education and age group;

- 18.1 % of the total labour force were comprised of persons within the 15-24 age group.
- Labour force participation rate for persons having education below high school was 48.1 % while that having higher education was 78.9 %.
- Labour force participation rate of persons having education below high school was 72.1 % for male while it was 23.5 % for female.
- Labour force participation rate of persons with high school and equivalent education was 76.1 % for male while it was 34.2 % for female.
- Labour force participation rate of persons with higher education was 84.3 % for male while it was 70.7 % for female.

39.2 % of persons who were not in the labour force had worked previously

- Among persons who had previously worked and were currently out of labour force; 35.3 % had worked in "agriculture", 24.1 % had worked in "industry", 5.1 % had worked in "construction" and 35.5 % had worked in "services".
- Of those who had worked before, but not in labour force in the period concerned (10 million 58 thousand persons);
 - 28.5 % were due to retirement,
 - 7 % were due to seasonal reasons,
 - 18.6 % were due to health reasons,
 - 11.1 % were due to marriage,
 - 6.2 % were due to being dismissed/liquidated/bankrupted of establishment,
 - 5.5 % were due to dissatisfaction with job,
 - 23.1 % were due to other reason
quitted their last job.

Labour movements in the period concerned

1 million 563 thousand persons either started to work or changed their current job in the period of August 2008 and it accounted for the 6.9 % of total employment. 25-34 age group comprises 31.3% of persons who started to work or changed the current job in this period.

Among persons who either began to work or changed the job, 19.8 % have started in "industry", 37.2 % have started in "services", 21.8 % have started in "construction" and 21.2 % have started in "agriculture".

16.1 % (392 thousand persons) of unemployed population were comprised of persons who quitted their job in this period.

Sample size and non-response rate

Results published in August 2008 release pertain to the 3 months period including July, August and November 2008. A total of 37 530 sample households, 26 470 of which were from urban areas and 11 060 of which were from rural areas were used in this term. 31 567 households were interviewed and non-response forms were filled due to various reasons for 5 963 households. In August 2008, the non-response rate was 12.2 % in rural areas, 16.2 % in urban areas, and 15 % for overall Turkey.

85 579 persons aged 15 and over from the sample households were interviewed in this period.