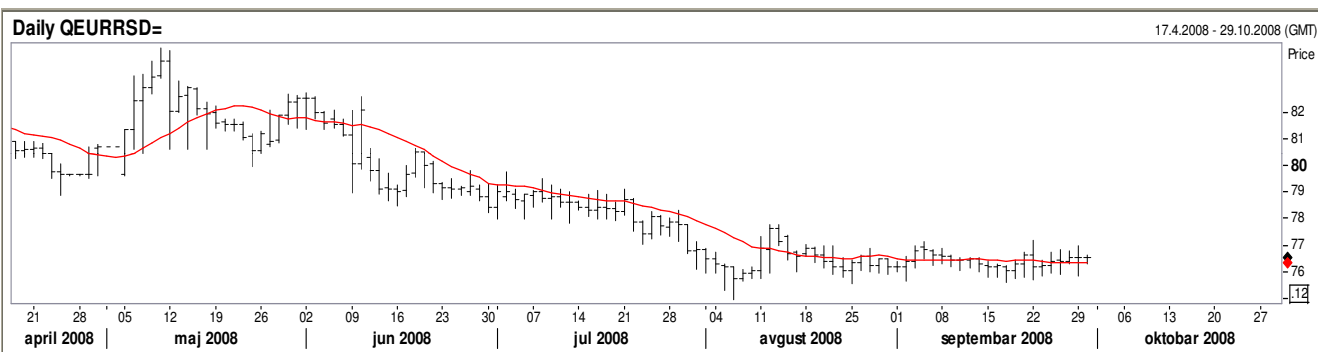


# DAILY VOBNEWS

BELIBOR / Belgrade interbanking		ZVANIČNI SREDNJI KURS NBS / official rate-middle	VOJVODANSKA BANKA		
offered rate		srednji kurs / middle	KURSNA LISTA / EXCHANGE RATES		
RSDTND=	15,95	AUD	42,7058	AUD	41,8517 43,5599
RSDSND=	16,02	CAD	50,6662	CAD	49,6529 51,6795
RSD1WD=	16,15	CHF	48,6609	CHF	47,6877 49,6341
RSD2WD=	16,22	GBP	96,0707	GBP	94,1493 97,9921
RSD1MD=	16,22	USD	53,2776	USD	52,2120 54,3432
RSD2MD=	16,21	EUR	76,5972	EUR	75,0653 78,1291
RSD3MD=	16,25				
RSD6MD=	16,20				

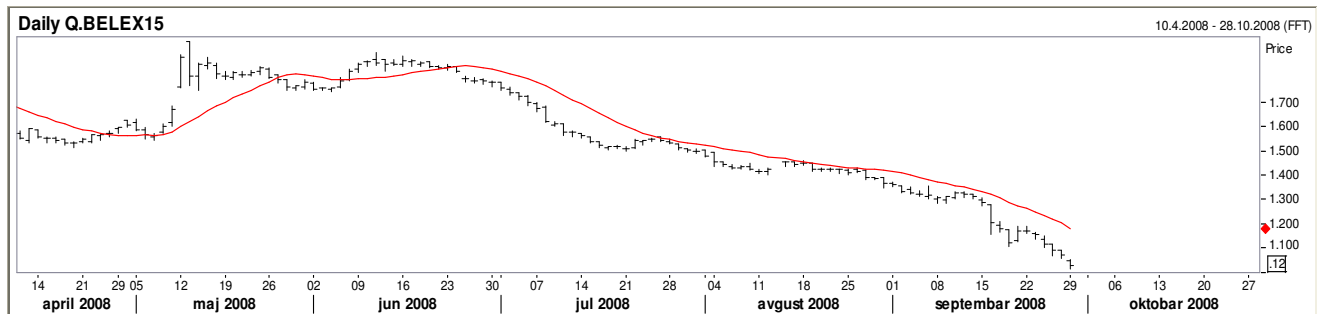
BEONIA		2W REPO RATE		SREDNJI KURS/middle rate
Poslednja vrednost / latest	15,24	15,75		EURRSD= 76,5972
Promet u milionima RSD / volume milion RSD	8920	6M AVG AND HIGHEST		
		15,72	15,81	

## EURRSD



A2009	95,21	A2011	83,30	A2013	73,15	A2015	63,25	Obveznice devizne stednje / Savings bonds
A2010	89,00	A2012	78,00	A2014	68,40	A2016	62,00	

## BELEX 15 - Belgrade stock exchange indices / Index Beogradske berze



Most traded shares / Najtrgovanije akcije		Gainers / akcije sa najvećim rastom cene		Losers / akcije sa najvećim padom cene	
AIK banka	17.903.170,00	Imlek a.d.	9,86%	Telefonija a.d.	-20,00%
Energoholding a.d.	5.956.470,00	Bambi a.d.	8,18%	Planum GP a.d.	-17,95%
Agrobanka	2.712.000,00	Metalac a.d.	7,06%	Agrobačka a.d.	-14,29%
Agrobačka a.d.	2.238.000,00	Tigar a.d.	1,74%	Komercijalna banka	-11,82%
Privredna banka	1.482.500,00	Ikarbus a.d.	1,45%	Energoholding a.d.	-9,43%

