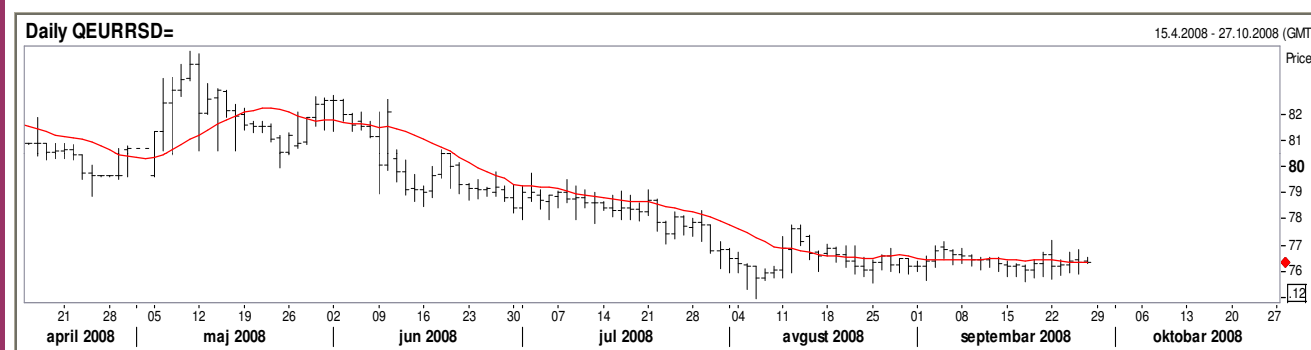


DAILY VOBNEWS

BELIBOR / Belgrade interbanking		ZVANIČNI SREDNJI KURS NBS / official rate-middle	VOJVODANSKA BANKA		
offered rate		srednji kurs / middle	KURSNA LISTA / EXCHANGE RATES		
RSDTND=	16,01		kupovni/bid prodajni/ask za efektivu		
RSDSND=	16,05	AUD	43,3653	AUD	42,4980 44,2326
RSD1WD=	16,13	CAD	50,4473	CAD	49,4384 51,4562
RSD2WD=	16,19	CHF	48,0486	CHF	47,0876 49,0096
RSD1MD=	16,21	GBP	95,9704	GBP	94,0510 97,8898
RSD2MD=	16,21	USD	52,1699	USD	51,1265 53,2133
RSD3MD=	16,26	EUR	76,3924	EUR	74,8646 77,9202
RSD6MD=	16,31				

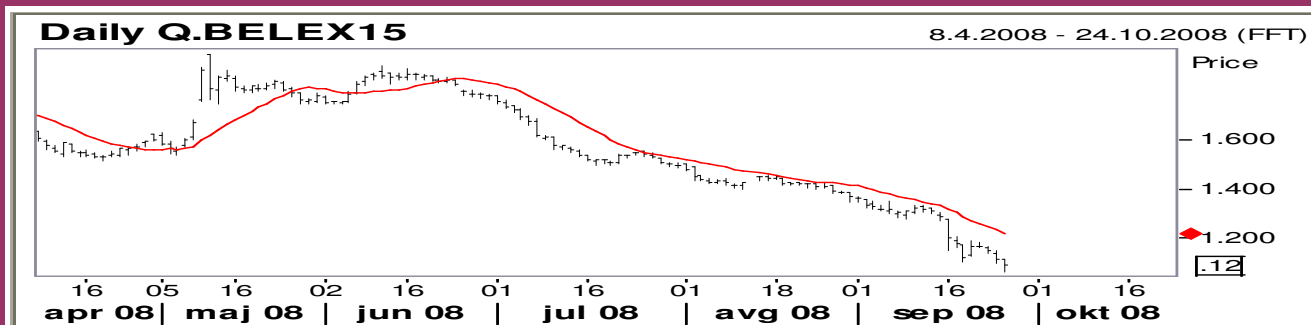
BEONIA		2W REPO RATE		SREDNJI KURS/middle rate
Poslednja vrednost / latest	15,12	15,75		EURRSD= 76,3924
Promet u milionima RSD / volume milion RSD	8409	6M AVG AND HIGHEST		
		15,72	15,81	

EURRSD



A2009	95,21	A2011	83,30	A2013	73,15	A2015	63,25	Obveznice devizne stednje / Savings bonds
A2010	89,00	A2012	78,00	A2014	68,40	A2016	62,00	

BELEX 15 - Belgrade stock exchange indices / Index Beogradske berze



Most traded shares / Najtrgovanije akcije		Gainers / akcije sa najvećim rastom cene		Losers / akcije sa najvećim padom cene	
AIK banka a.d.	65.744.883,00	Ikarbus	10,83%	Imlek	-11,97%
Sojaprotein	4.846.735,00	Velefarm	4,00%	Čačanska banka	-6,98%
Zorkafarmacija	3.562.400,00	Zorkafarmacija	1,56%	Veterinarski zavod su	-6,25%
Univerzal banka	3.140.631,00			Energoholding	-5,47%
Energoholding	3.017.155,00			Alfaplam	-5,33%

