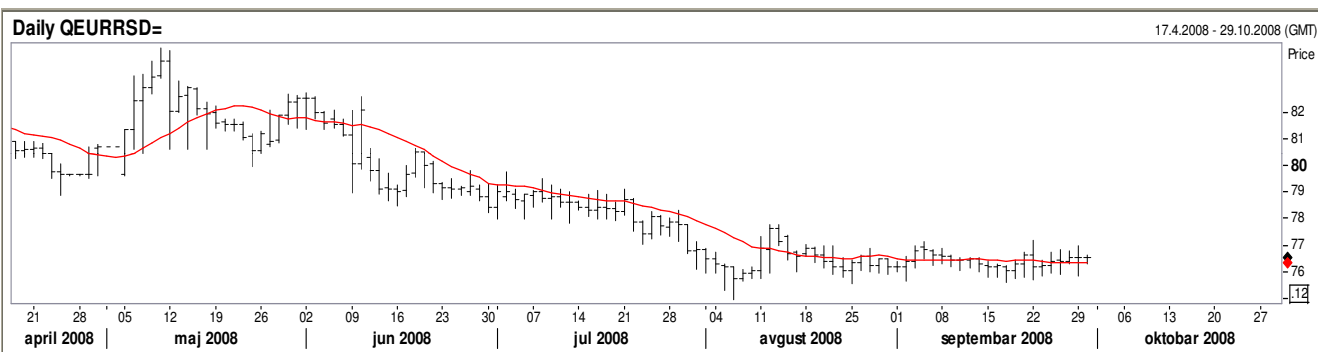


DAILY VOBNEWS

BELIBOR / Belgrade interbanking		ZVANIČNI SREDNJI KURS NBS / official rate-middle	VOJVOĐANSKA BANKA		
offered rate		srednji kurs / middle	KURSNA LISTA / EXCHANGE RATES		
RSDTND=	16,00	AUD	43,1278	AUD	42,2652 43,9904
RSDSND=	16,02	CAD	51,3457	CAD	50,3188 52,3726
RSD1WD=	16,11	CHF	48,8782	CHF	47,9006 49,8558
RSD2WD=	16,16	GBP	97,9187	GBP	95,9603 99,8771
RSD1MD=	16,21	USD	55,3159	USD	54,2096 56,4222
RSD2MD=	16,23	EUR	76,6899	EUR	75,1561 78,2237
RSD3MD=	16,26				
RSD6MD=	16,29				

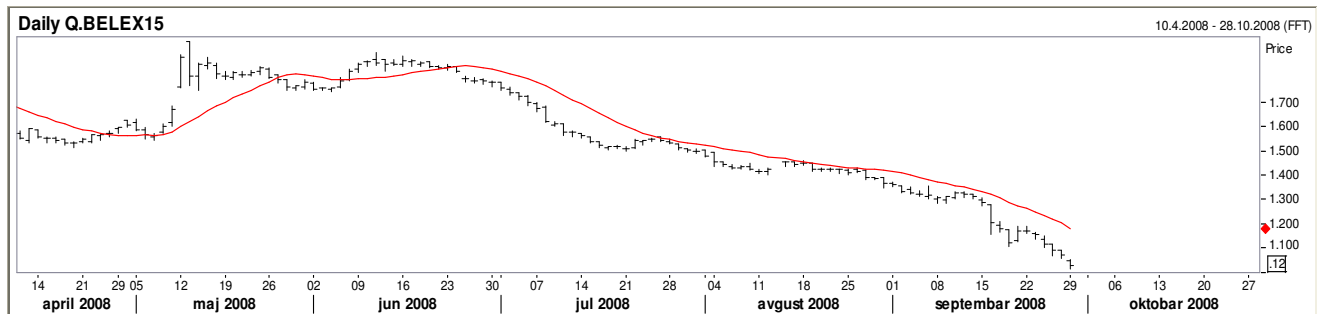
BEONIA		2W REPO RATE		SREDNJI KURS/middle rate
Poslednja vrednost / latest	15,26	15,75		EURRSD= 76,6899
Promet u milionima RSD / volume milion RSD	7303	6M AVG AND HIGHEST		
		15,72	15,81	

EURRSD



A2009	95,21	A2011	83,30	A2013	73,15	A2015	63,25	Obveznice devizne stednje / Savings bonds
A2010	89,00	A2012	78,00	A2014	68,40	A2016	62,00	

BELEX 15 - Belgrade stock exchange indices / Index Beogradske berze



Most traded shares / Najtrgovanije akcije		Gainers / akcije sa najvećim rastom cene		Losers / akcije sa najvećim padom cene	
AIK banka	18.007.901,00	Fitofarmacija a.d.	17,48%	Globos osiguranje	-13,04%
Sojaprotein a.d.	11.637.679,00	Agrobanka	6,56%	Komercijalna banka	-9,09%
Dunav osiguranje	11.112.000,00	AIK banka	6,45%	Energoholding a.d.	-5,90%
Planum GP a.d.	7.477.200,00	Planum GP a.d.	6,25%	Metals banka	-2,56%
Energoholding	6.230.581,00	Dunav osiguranje	3,09%	Velefarm	-2,42%

